

1. SCOPE

1.1 Purpose.- The purpose of this specification is to authorize the use of reconditioned parts and provide reconditioning instructions for components of the floorboard installations as installed in T-7, T-7C, UC-45B, C-45F and T-11 aircraft, and instructions for modifications necessary to adapt them for use in C-45G and C-45H aircraft in accordance with Drawings 694-183120 pilots compartment floor board installation, 694-183100 cabin floor installation, and 804-183150 rear baggage compartment floor installation.

1.2 Application.- All reconditioning operations and repairs covered by this specification may be accomplished where required without further authorization. Repairs not authorized by this specification cannot be performed without further authorization.

1.3 List of Pages and Revisions.- This specification consists of the pages listed below. An asterisk (\*) denotes pages revised by the current revision.

<u>Page</u>	<u>Date</u>	<u>Description of Revision</u>	<u>Serial Effectivity</u>
1	4-29-53		
2	4-29-53		
3	4-29-53		
4	4-29-53		
5	4-29-53		
6	4-29-53		
7	4-29-53		
8	4-29-53		
9	4-29-53		
10	4-29-53		
11	4-29-53		
12	4-29-53		
13	4-29-53		
14	4-29-53		
15	4-29-53		
16	4-29-53		

APPROVED:

*Kenneth Oger*  
USAF Quality Control

A 6-9

WRITTEN BY <i>L. M. Fougere</i>	DATE ISSUED 4-29-53	OVERHAUL SPECIFICATION FLOOR BOARD INSTALLATIONS - MODEL C-45G AND C-45H.		
PROJECT ENGINEER				
APPROVAL <i>[Signature]</i>	DATE REVISED	Beech Aircraft CORPORATION Wichita 1, Kansas	OVERHAUL SPECIFICATION	PAGE
APPROVAL <i>[Signature]</i>			NO. 5310	1

2. APPLICABLE PUBLICATIONS

2.1 Specifications:

2.1.1 Beech.-

PS 133B	Resin Glue Specification for Wood Gluing
PS 201F	Use, Characteristics, and Application of Glues, Cements, and Sealers
FS 370A	Finish Specification - Model C-45G and C-45H Aircraft
OS 5301	Furnishings Installation - Model C-45G and C-45H Aircraft
OS 7002	Cleaning Procedures for Reconditioned Aircraft
OS 7008	General Acceptable Quality Standards
OS 7010	Removing Corrosion from Aluminum Parts

3. REQUIREMENTS

3.1 Parts Involved:

3.1.1 Parts Not Used.- Parts listed on Drawings 84-183120, 814-183120, 804-183120, and 804-183140 pilots compartment floor board installation, 84-183100, 804-183100, 824-183100, 804-183150 and 824-183300 cabin floor board installation and 84-183150 rear baggage compartment floor installation will not be re-used in the Model C-45G or C-45H aircraft and will be disposed of at the direction of the customer except the parts listed in Paragraph 3.1.2 of this specification.

3.1.2 Parts to be Reconditioned.- The following parts are to be reconditioned in accordance with the instructions contained herein. "Reconditioned" means the disassembly, cleaning, inspection and correction of discrepancies, repair and/or replacement of components, and modifications to incorporate changes in accordance with applicable engineering drawings to assure an operationally safe and serviceable aircraft.

WRITTEN BY <i>E. M. Foyant</i>	DATE ISSUED 4-29-53	<b>OVERHAUL SPECIFICATION</b> FLOOR BOARD INSTALLATIONS & MODEL C-45G AND C-45H		
PROJECT ENGINEER <i>[Signature]</i>	DATE REVISED			
APPROVAL <i>[Signature]</i>		Beech Aircraft CORPORATION Wichita 1, Kansas	OVERHAUL SPECIFICATION No. 5310	PAGE 2

3.1.2.1. Pilots Compartment Floor Board Installation  
84-183120, 84-183120, 804-183140 and 804-183120.-

- 183121-1 Reinforcement
- 183121-2 Reinforcement
- 183123-2 Inspection door plate
- 183124 Elevator control pulley cover
- 804-183134 Pilots compartment floor board joint plate
- 64-183137 Pilots compartment floor board joint plate
- 804-183138 Pilots floor board door assembly
- 183149 Aileron cable inspection hole cover plate
- 180091 Placard
- 183142 Plate
- 187509A Holddown

3.1.2.2 Cabin Floor Board Installations 84-183100,  
824-183100, and 824-183300.-

- 84-183103 Left cabin floor assembly
- 84-183104 Right cabin floor assembly
- 183108 Forward center cabin floor assembly
- 183109 Rear center cabin floor assembly
- 824-183311 Right cabin floor assembly
- 824-183312 Left cabin floor assembly

3.1.2.3 Rear Baggage Compartment Floor Installation 84-183150.-

- 84-183151 Rear baggage compartment center floor board assembly
- 84-183152 Rear baggage compartment left floor board assembly
- 84-183153 Rear baggage compartment right floor board assembly

3.1.3 Parts to be Supplied New:

WRITTEN BY <i>E. M. Fougnet</i>	DATE ISSUED 4-29-53	<b>OVERHAUL SPECIFICATION</b> FLOOR BOARD INSTALLATIONS - MODEL C-45G AND C-45H		
PROJECT ENGINEER				
APPROVAL <i>[Signature]</i>	DATE REVISED	Beech Aircraft CORPORATION Wichita 1, Kansas	OVERHAUL SPECIFICATION	PAGE
APPROVAL <i>[Signature]</i>			NO. 5310	3

3.1.3.1 Pilots Compartment Floor Board Installation  
694-183120.- All parts called out on Drawing  
 694-183120 are to be supplied new except those parts listed in  
 Paragraph 3.1.2.1 of this specification.

3.1.3.2 Cabin Floor Installation 694-183100:

3.1.3.2.1 Cabin Floor Assembly-Left 694-183103.-

- 404-180234 Spacer
- 183113-1 Cap strip
- 183113-2 Cap strip
- 183113-3 Cap strip
- 183113-4 Cap strip
- 183111 Plate
- All edging and felt pads
- OS 5310-2 Plug

3.1.3.2.2 Cabin Floor Assembly-Right 694-183111.-

- 404-180234 Spacer
- 183111 Plate
- 183113-1 Cap strip
- 183113-2 Cap strip
- 183113-3 Cap strip
- 183113-4 Cap strip
- All edging and felt pads
- OS 5310-3 Plug
- OS 5310-5 Plate

3.1.3.2.3 Forward Center Cabin Floor Assembly 183108.-

All edging and felt pads

WRITTEN BY <i>L. M. Farnum</i>	DATE ISSUED 4-29-53	<b>OVERHAUL SPECIFICATION</b> FLOOR BOARD INSTALLATIONS - MODEL C-45G AND C-45H		
PROJECT ENGINEER <i>L. M. Farnum</i>	DATE REVISED			
APPROVAL <i>[Signature]</i>		Beech Aircraft CORPORATION Wichita 1, Kansas	OVERHAUL SPECIFICATION NO. 5310	PAGE 4
APPROVAL <i>[Signature]</i>				



3.1.3.2.4 Rear Center Cabin Floor Assembly 183109.-  
All edging and felt pads

3.1.3.3 Rear Baggage Compartment Floor Board Installation 404-183150:

3.1.3.3.1 Rear Baggage Compartment Left Floor Board Assembly 404-183152.-  
All edging and felt pads

3.1.3.3.2 Rear Baggage Compartment Center Floor Board Assembly 404-183151.-  
All edging and felt pads

3.1.3.3.3 Rear Baggage Compartment Right Floor Board Assembly 407-183152-1.-  
All edging and felt pads

3.2 Cause for Rejection.- Damage or wear which cannot be corrected by one or more of the authorized repairs listed in Paragraph 3.4 of this specification and the specific conditions listed below is cause for rejection.

- (a) Floor board assemblies will be rejected if the total amount of fir or birch plywood necessary to make repairs exceeds 1/3 of the total area of the floor board.
- (b) Right and left cabin floor board assemblies will be rejected if completely broken in two or if damage or deterioration to the outboard or inboard edge of the board makes it necessary to install a reinforcement over one-half the over-all length of the board.

3.3 Reconditioning Operations:

3.3.1 Pilots Compartment Floor Board Installation 84-183120, 814-183120 and 804-183140:

WRITTEN BY <i>L. M. Foyant</i>	DATE ISSUED 4-29-53	<b>OVERHAUL SPECIFICATION FLOOR BOARD INSTALLATIONS - MODEL C-45G AND C-45H</b>		
PROJECT ENGINEER <i>[Signature]</i>				
APPROVAL <i>[Signature]</i>	DATE REVISED	Beech Aircraft CORPORATION Wichita 1, Kansas	OVERHAUL SPECIFICATION NO. 5310	PAGE 5
APPROVAL <i>[Signature]</i>				

3.3.1.1 Reinforcements 183121-1 and 183121-2; Elevator Control Pulley Cover 183124; Aileron Cable Inspection Hole Cover Plate 183149; Plate 183142; and Holddown 187509A.-

- (a) Inspect for nonrepairable conditions.
- (b) Clean in accordance with OS 7002.
- (c) Remove corrosion in accordance with OS 7010.
- (d) Finish in accordance with FS 370A.

3.3.1.2 Inspection Door Plate 183123-2.-

- (a) Inspect for nonrepairable conditions.
- (b) Clean in accordance with OS 7002.

3.3.1.3 Pilots Compartment Floor Board Joint Plate 804-183134 and 64-183137.- (These parts are to be modified to conform to Drawing 404-183134).

- (a) Inspect for nonrepairable conditions.
- (b) Clean in accordance with OS 7002.
- (c) Remove corrosion in accordance with OS 7010.
- (d) Cut off to overall dimension 17-3/8 inch and locate attaching holes in accordance with Drawing 404-183134.
- (e) Finish in accordance with FS 370A.

3.3.1.4 Pilots Floor Board Door Assembly 804-183138.-

- (a) Inspect for nonrepairable conditions.
- (b) Remove and scrap edging and felt pads.
- (c) Repair as necessary as authorized herein.
- (d) Replace edging and felt pads in accordance with Drawing 804-183138.
- (e) Clean linoleum surface with thinner as necessary and finish when required in accordance with FS 370A.

WRITTEN BY <i>R. M. Fougere</i>	DATE ISSUED 4-29-53	<b>OVERHAUL SPECIFICATION</b> FLOOR BOARD INSTALLATIONS - MODEL C-45G AND C-45H		
PROJECT ENGINEER <i>C. J. [unclear]</i>	DATE REVISED			
APPROVAL <i>[Signature]</i>		Boesch Aircraft CORPORATION Wichita 1, Kansas	OVERHAUL SPECIFICATION NO.	PAGE
APPROVAL <i>[Signature]</i>			5310	6

3.3.1.5 Landing Gear and Flap Handcrank Placard 180091.-

- (a) Inspect for nonrepairable conditions.
- (b) Clean in accordance with OS 7002. (Care must be taken not to deface the placard).

3.3.2 Cabin Floor Board Installations 84-183100, 824-183100 and 824-183300.- Components of these installations

will be modified to conform to Drawing 694-183100 as indicated in Paragraph 3.3.2.1 through 3.3.2.6 of this specification.

3.3.2.1 Left Cabin Floor Assembly 84-183103.- This assembly will be modified to conform to Drawing 694-183103 except as noted.

- (a) Inspect for nonrepairable conditions.
- (b) Remove and scrap all cap strips, felt strips and edging.
- (c) Repair the 84-183103-1 board as necessary as authorized herein.
- (d) Plug all screw holes with wood dowel rods. Glue dowel rods in accordance with PS 133B.
- (e) Plug the 3-7/8- by 5-3/4-inch elliptical flare chute cut-out with OS 5310-2 wood plug as illustrated in Figure 1 of this specification. Glue plug in accordance with PS 133B. Reinforce the plug by inserting dowel rod as illustrated in Figure 1. Glue dowel rod in accordance with PS 133B.
- (f) Redrill screw holes and rivet holes and make cutouts for inspection hole and chair mounting holes in accordance with Drawing 694-183103, except as noted below in Item (h).
- (g) Reinstall 183103 inspection plate. The existing inspection hole will not be plugged.
- (h) The existing outboard inspection hole and 84-183125 plate (Reference, location 62-7/32 inches from the forward end of board) will be used for the inspection hole and plate as called out to be located 62-1/32 inches aft of the forward end of board on Drawing 694-183103.
- (i) Treat the bottom of the board with linseed oil.
- (j) Clean the linoleum surface with thinner and finish in accordance with PS 370A.

WRITTEN BY <i>E. M. Fauguet</i>	DATE ISSUED 4-29-53	<b>OVERHAUL SPECIFICATION</b>	
PROJECT ENGINEER		FLOOR BOARD INSTALLATIONS -	
APPROVAL <i>[Signature]</i>	DATE REVISED	Beech Aircraft CORPORATION	OVERHAUL SPECIFICATION NO. 5310
APPROVAL <i>[Signature]</i>		Wichita, Kansas	PAGE 7

3.3.2.2 Right Cabin Floor Assembly 84-183104.-- This assembly will be modified to conform to Drawing 894-183311.

- (a) Inspect for nonrepairable conditions.
- (b) Remove and scrap felt strips, cap strips, edging, reinforcement plates 84-183115-2, 84-183111, and 84-183107; reinforcement plate assemblies 84-183114, 84-183110 and 84-183106; plate assemblies 84-183112 and 84-183108; plates 84-183124, 84-183109-2, 84-183109-1 and 84-183113; and seal 84-183123.
- (c) Repair the 84-183104-1 board as necessary as authorized herein.
- (d) Plug all screw holes with wood dowel rod. Glue the dowel rod in accordance with PS 133B.
- (e) Plug the aft driftmeter cutout with OS 5310-3 plug. Glue the plug in accordance with PS 133B. OS 5310-3 plug is to be fabricated as illustrated in Figure 2 of this specification. Reinforce the OS 5310-3 plug by inserting two dowel rods through the board and plug as illustrated in Figure 2 of this specification.
- (f) Install OS 5310-5 plate in place of existing cover plates on the two forward driftmeter cutouts. (Omit leather seals.) OS 5310-5 plate is to be fabricated and installed as illustrated in Figure 2 of this specification. Drill the two screw holes next to bulkhead cap strip at installation. Locate the holes in the coverplate so that the nuts will clear cap strips approximately 1/8 inch. Maintain 5/16-inch edge distance from center of hole. Install plates with existing screws.
- (g) Make cutouts for chair mountings and inspection holes in accordance with Drawing 894-183311.
- (h) Install new cap strips, felt pads, edging and 183311 plates in accordance with Drawing 894-183311.
- (i) Treat the bottom of the board with linseed oil.
- (j) Clean the linoleum surface with thinner and finish in accordance with FS 370A.

3.3.2.3 Forward Center Cabin Floor Assembly 183108 and Rear Center Cabin Floor Assembly 183109.--

- (a) Inspect for nonrepairable conditions.
- (b) Remove and scrap edging and felt pads.

WRITTEN BY <i>L. M. August</i>	DATE ISSUED 4-29-53	<b>OVERHAUL SPECIFICATION FLOOR BOARD INSTALLATIONS - MODEL C-45G AND C-45H</b>		
PROJECT ENGINEER <i>[Signature]</i>				
APPROVAL <i>[Signature]</i>	DATE REVISED	Beech Aircraft CORPORATION Wichita 1, Kansas	OVERHAUL SPECIFICATION NO. 5310	PAGE 8
APPROVAL <i>[Signature]</i>				

3.3.2.3. Forward Center Cabin Floor Assembly 183108 and Rear Center Cabin Floor Assembly 183109.- (Continued)

- (c) Repair as necessary as authorized herein.
- (d) Plug all non-useable rivet and screw holes with wood dowel & rod. Glue dowel rod in accordance with PS 133B.
- (e) Drill rivet and screw holes and install new edging and felt pads in accordance with Drawings 183108 and 183109.
- (f) Treat the bottom of the board with linseed oil.
- (g) Clean linoleum surface with thinner and finish in accordance with PS 370A.

3.3.2.4 Right Cabin Floor Assembly 824-183311.- This assembly will be modified to conform to Drawing 894-183311.

- (a) Inspect for nonrepairable conditions.
- (b) Remove and scrap all edging, felt pads, 824-183320 and 824-183321 stiffeners; 824-183315 and 824-183310 plates; 824-183322 reinforcement; 824-183309 plate assembly; and 824-183311-28 block.
- (c) Plug all screw holes and rivet holes with wood dowel rod. Glue the dowel rod in accordance with PS 133B.
- (d) The existing inspection hole in the floor board need not be plugged. Use the existing 824-180607 inspection door and 824-180608 reinforcement.
- (e) Make cutouts for chair mountings and inspection holes in accordance with Drawing 894-183311.
- (f) Install new cap strips, felt pads, edging and 183111 plates in accordance with Drawing 894-183311.
- (g) Treat the bottom of the board with linseed oil.
- (h) Clean the linoleum surface with thinner and finish in accordance with PS 370A.

3.3.2.5 Left Cabin Floor Assembly 824-183312.- This assembly will be modified to conform to Drawing 694-183103 except as noted.

- (a) Inspect for nonrepairable conditions.
- (b) Remove and scrap all felt pads, edging stiffeners 824-183323 and 824-183320; reinforcement 824-183312-16 and 824-183322; plate 824-183310 and plate assembly 824-183309.

WRITTEN BY <i>J. M. Fauguet</i>	DATE ISSUED 4-29-53	<b>OVERHAUL SPECIFICATION FLOOR BOARD INSTALLATIONS - MODEL C-45G AND C-45H</b>		
PROJECT ENGINEER <i>J. M. Fauguet</i>	DATE REVISED			
APPROVAL <i>[Signature]</i>				
APPROVAL <i>[Signature]</i>				

3.3.2.5 Left Cabin Floor Assembly 824-183312.- (Continued)

- (c) Plug all screw holes and rivet holes with wood dowel rod. Glue the dowel rod in accordance with PS 133B.
- (d) The inspection hole located 62-3/16 inches from the forward end of the board will be acceptable for use without rework. Use existing 824-183319 inspection plate in place of 183111 plate as called out on Drawing 694-183103.
- (e) The inspection hole located 69-1/4 inches from the forward end of the board need not be plugged. Cover with existing 824-183318 inspection plate.
- (f) Make cutouts for chair brackets and the inspection hole located 29-23/32 inches from the forward end of the board and redrill the rivet and screw holes in accordance with Drawing 694-183103.
- (g) Install new cap strips, felt pads, edging and 824-183319 inspection plate in accordance with Drawing 694-183103.

3.3.3 Rear Baggage Compartment Floor Installation 84-183150.-  
 Components of this installation will be modified to conform to Drawing 404-183150 as indicated in Paragraphs 3.3.3.1 through 3.3.3.3 of this specification.

3.3.3.1 Rear Baggage Compartment Center Floor Board Assembly 84-183151.- This assembly will be modified to conform to Drawing 404-183151.

- (a) Inspect for nonrepairable conditions.
- (b) Remove and scrap felt strips and edging.
- (c) Repair board as necessary as authorized herein.
- (d) Plug all screw holes with wood dowel rod. Glue the dowel rod in accordance with PS 133B.
- (e) Cut board to dimensions given on Drawing 404-183151.
- (f) Redrill rivet and screw holes in accordance with Drawing 404-183151.
- (g) Install new felt pads and edging in accordance with Drawing 404-183151.
- (h) Treat the bottom of the board with linseed oil.
- (i) Clean the linoleum surface with thinner and finish in accordance with FS 370A.

WRITTEN BY <i>R. M. Fuguet</i>	DATE ISSUED 4-29-53	<b>OVERHAUL SPECIFICATION FLOOR BOARD INSTALLATIONS - MODEL C-45G AND C-45H</b>		
PROJECT ENGINEER <i>R. M. Fuguet</i>				
APPROVAL <i>[Signature]</i>	DATE REVISED	Beech Aircraft CORPORATION Wichita, Kansas	OVERHAUL SPECIFICATION NO. 5310	PAGE 10
APPROVAL <i>[Signature]</i>				

3.3.3.2 Rear Baggage Compartment Left Floor Board Assembly  
84-183152.- This assembly will be modified to conform to Drawing 404-183152.

- (a) Inspect for nonrepairable conditions.
- (b) Remove and scrap all felt pads and edging.
- (c) Cut off the outboard and aft edge of the board to conform to dimensions given on Drawing 404-183152.
- (d) Repair as necessary as authorized herein.
- (e) Plug all rivet and screw holes with wood dowel rod. Glue dowel rod in accordance with PS 133B.
- (f) Redrill all rivet and screw holes and install new felt pads and edging in accordance with Drawing 404-183152.
- (g) Treat the bottom of the board with linseed oil.
- (h) Clean the linoleum surface of the board with thinner and finish in accordance with FS 370A.

3:3.3.3 Rear Baggage Compartment Right Floor Board Assembly  
84-183152.- This assembly will be modified to conform to Drawing 407-183152-1.

- (a) Inspect for nonrepairable conditions.
- (b) Remove and scrap all felt pads, edging and 183155 strip.
- (c) Cut off outboard and aft edges of board to conform to dimensions given on Drawing 407-183152-1.
- (d) Repair as necessary as authorized herein.
- (e) Plug all rivet and screw holes with wood dowel rod. Glue dowel rod in accordance with PS 133B.
- (f) Redrill all rivet and screw holes and install new edging and felt pads in accordance with Drawing 407-183152-1.
- (g) Treat the bottom of the board with linseed oil.
- (h) Clean the linoleum surface with thinner and finish in accordance with FS 370A.

3.4 Authorized Repairs:

WRITTEN BY <i>[Signature]</i>	DATE ISSUED 4-29-33	<b>OVERHAUL SPECIFICATION FLOOR BOARD INSTALLATIONS - MODEL C-45G AND C-45H</b>		
PROJECT ENGINEER <i>[Signature]</i>				
APPROVAL <i>[Signature]</i>	DATE REVISED	Cessna Aircraft CORPORATION Wichita, L. Kansas	OVERHAUL SPECIFICATION NO. 5310	PAGE 11
APPROVAL <i>[Signature]</i>				

3.4.1 Pilots Compartment Floor Board Installation  
84-183120, 814-183120 and 804-183140:

3.4.1.1 Pilots Floor Board Door Assembly 804-183138:

- (a) Replace damaged or deteriorated doors with doors fabricated from useable floor board material taken from non-repairable cabin floor boards. Reassemble in accordance with Drawing 804-183138.
- (b) Replace broken or extensively damaged 804-183473 latch with 804-183473 or 894-183473 latch.
- (c) Replace defaced or broken 180790 placard with a new placard.

3.4.2 Cabin Floor Board Installation 84-183100, 824-183100, and 824-183300:

3.4.2.1 Left Cabin Floor Assemblies 84-183103 and 824-183312, and Right Cabin Floor Assemblies 84-183104 and 824-183311:

- (a) Rework floor boards with damaged or deteriorated areas by removing the affected area(s) of balsa core, maintaining a rectangular shape that extends the full width of the floor board. The outside plywood facing may be removed from the bottom of the board to give access to the balsa wood core when necessary. Replace the balsa core with 3/8-inch 5-ply commercial (Douglas) fir plywood or 3/8-inch 5-ply birch plywood. Glue in accordance with PS 133B. Replace the outside plywood with material conforming to the plywood facing of the rest of the board.

The following limitations will apply when making the above repairs:

- (1) Joints between the added plywood and existing balsa core, and joints between replaced outside plywood facing shall not coincide. Maintain a 3-inch overlap in either direction.
- (2) No spacers, screws, or rivets are to be installed through wood joints. Avoid this by removing and replacing additional wood as necessary.

WRITTEN BY <i>E. M. Lambert</i>	DATE ISSUED 4-29-53	<b>OVERHAUL SPECIFICATION</b> FLOOR BOARD INSTALLATIONS - MODEL C-45G AND C-45H		
PROJECT ENGINEER				
APPROVAL <i>[Signature]</i>	DATE REVISED	Beech Aircraft CORPORATION Wichita 1, Kansas	OVERHAUL SPECIFICATION NO. 5310	PAGE 12
APPROVAL <i>[Signature]</i>				



3.4.2.1 Left Cabin Floor Assemblies 84-183103 and 824-183312;  
and Right Cabin Floor Assemblies 84-183104 and  
824-183311.- (Continued)

- (3) The minimum width of the plywood reinforcement used will be 4 inches when outside plywood facing is not damaged or broken and 6 inches when facing is damaged or broken. The maximum width will be determined by the total area of plywood necessary to repair the floor board. The total area of the plywood used to repair a floor board shall not exceed 1/3 of the total area of the floor board.
- (b) Rework floor boards with damaged or deteriorated edge by cutting out the balsa core of the affected area as necessary to maintain a rectangular shape along the edge of the board and to maintain a 3-inch minimum (average) overlap of plywood facing. The minimum width of the cutout will be 3 inches. Cut a piece of 3/8-inch 5-ply commercial (Douglas) fir plywood or 3/8-inch 5-ply birch plywood to match the cutout and wide enough to maintain drawing dimensions on the floor board. Glue in accordance with PS 133B. Trim floor board to drawing dimensions.
- (c) Rework floor boards having broken or deteriorated corners by cutting out the balsa core of the affected area as necessary to maintain a 3-inch overlap of plywood facing over the reinforcement to be inserted. Maintain a square or rectangular shape. Cut a piece of 3/8-inch 5-ply commercial (Douglas) fir plywood or 3/8-inch 5-ply birch plywood to dimensions. Glue the reinforcement in accordance with PS 133B.
- (d) Repair linoleum surfaces as necessary due to damage or installation of reinforcements by trimming rough edges and fitting a new piece of linoleum in cutout area. Cement the linoleum to the plywood in accordance with PS 201F.

3.4.2.2 Forward Center Cabin Floor Assembly 183108 and Rear  
Center Cabin Floor Assembly 183109.-

- (a) Rework broken or deteriorated corners the same as Paragraph 3.4.2.1.(c) of this specification.

3.4.3 Rear Baggage Compartment Floor Installation 84-183150:

WRITTEN BY <i>R. M. Ferguson</i>	DATE ISSUED 4-29-53	OVERHAUL SPECIFICATION FLOOR BOARD INSTALLATIONS - MODEL C-45G AND C-45H		
PROJECT ENGINEER <i>R. M. Ferguson</i>				
APPROVAL <i>[Signature]</i>	DATE REVISED	Beech Aircraft CORPORATION Wichita 1, Kansas	OVERHAUL SPECIFICATION	PAGE
APPROVAL <i>[Signature]</i>			NO. 5310	13

3.4.3.1 Rear Baggage Compartment Center Floor Board Assembly 84-183151.-

- (a) Rework broken or deteriorated corners the same as Paragraph 3.4.2.1.(c) of this specification.
- (b) Replace boards that are broken or damaged extensively whenever possible by fabricating the board from useable materials taken from nonrepairable cabin floor boards.

3.4.3.2 Rear Baggage Compartment Left Floor Board Assembly 84-183152; and Rear Baggage Compartment Right Floor Board Assembly 84-183153.-

- (a) Rework broken or deteriorated corners the same as Paragraph 3.4.2.1.(c) of this specification.

4. INSPECTION

4.1 General.- The parts will be inspected to the general acceptable quality standards of OS 7008 and the specific standards listed below.

- (a) Cabin floor boards will be acceptable for use with over-all length and width dimensions  $1/8$  inch less than dimensions given on Drawings 694-183103 and 894-183311. To compensate for short or narrow boards it will be an acceptable practice at installation to install one additional felt pad to the forward, rear and outboard edges of the board.
- (b) Deviations from drawing callouts for inspection hole cut-outs and inspection plates as authorized herein will be acceptable.

WRITER BY <i>A. M. Fiquit</i>	DATE ISSUED 4-29-53	<b>OVERHAUL SPECIFICATION</b> FLOOR BOARD INSTALLATIONS - MODEL C-45G AND C-45H		
PROJECT ENGINEER <i>A. M. Fiquit</i>	DATE REVISED			
APPROVAL <i>[Signature]</i>		Beech Aircraft CORPORATION Wichita 1, Kansas	OVERHAUL SPECIFICATION NO. 5310	PAGE 14

A

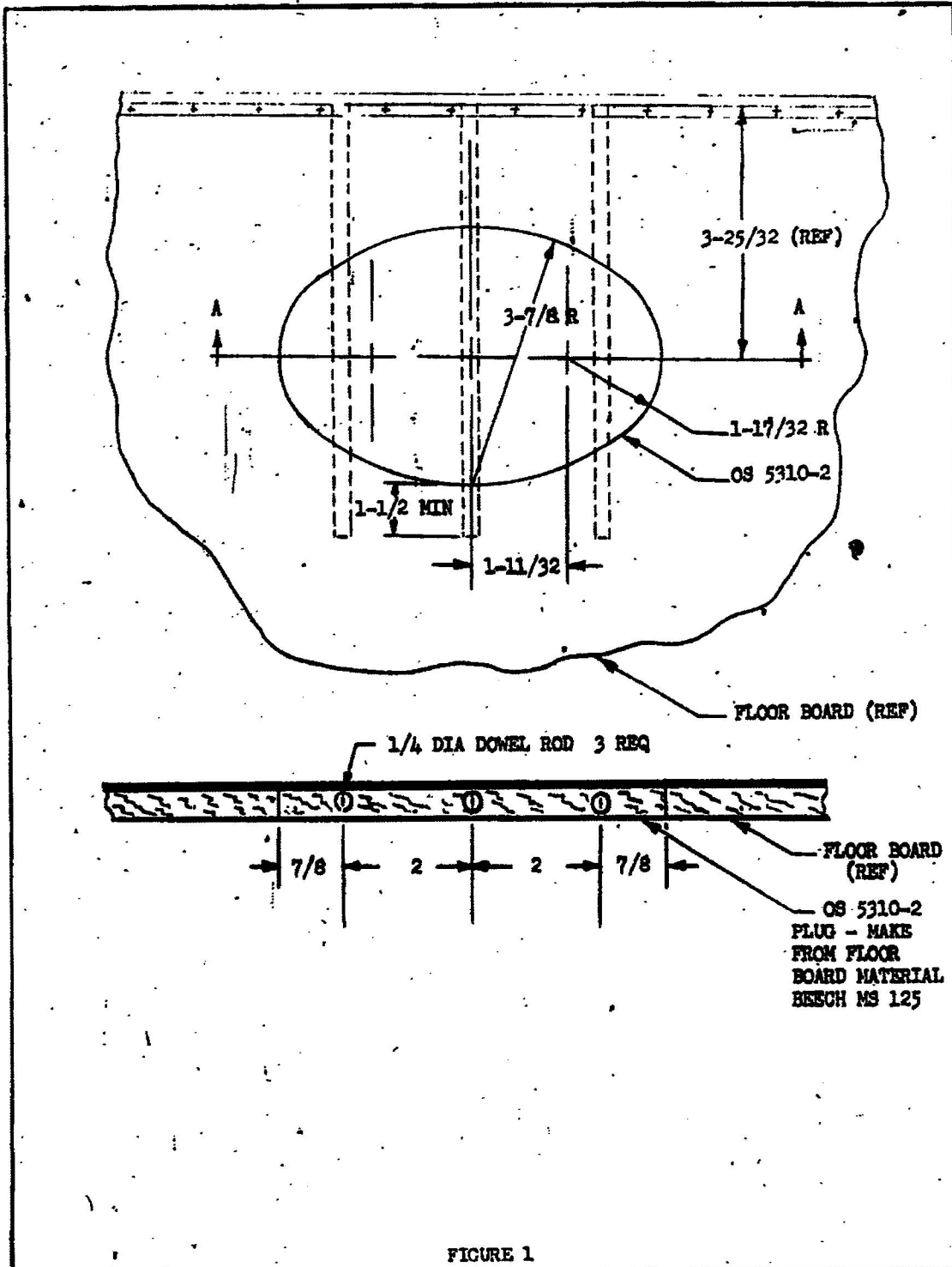


FIGURE 1

WRITTEN BY <i>E. M. Farnum</i>	DATE ISSUED 4-29-53	<b>OVERHAUL SPECIFICATION</b> FLOOR BOARD INSTALLATIONS - MODEL C-45G AND C-45H		
PROJECT ENGINEER <i>E. M. Farnum</i>				
APPROVAL <i>[Signature]</i>	DATE REVISED	Beech Aircraft CORPORATION Wichita 1, Kansas	OVERHAUL SPECIFICATION NO 5310	PAGE 15
APPROVAL <i>[Signature]</i>				

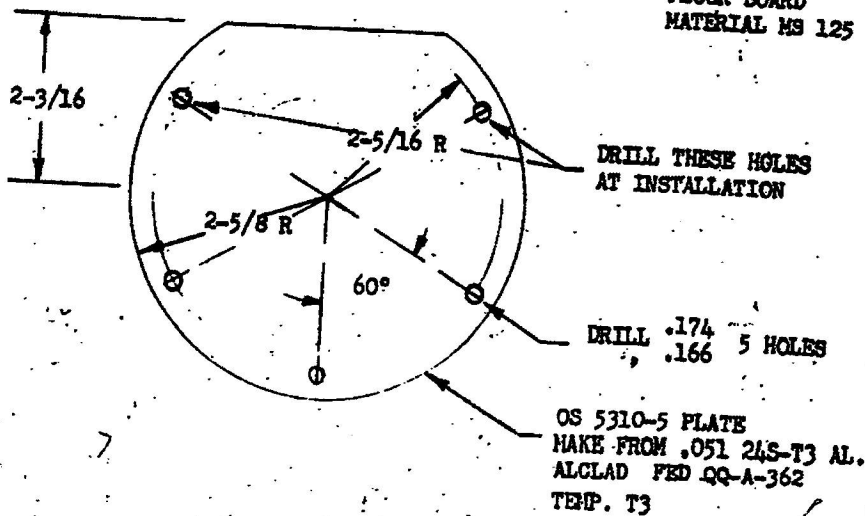
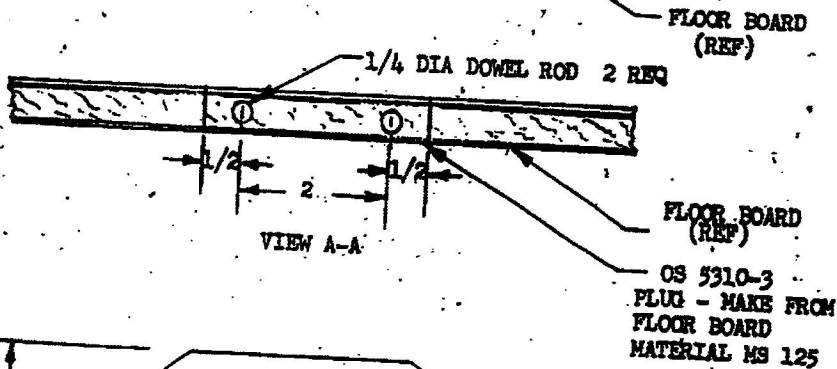
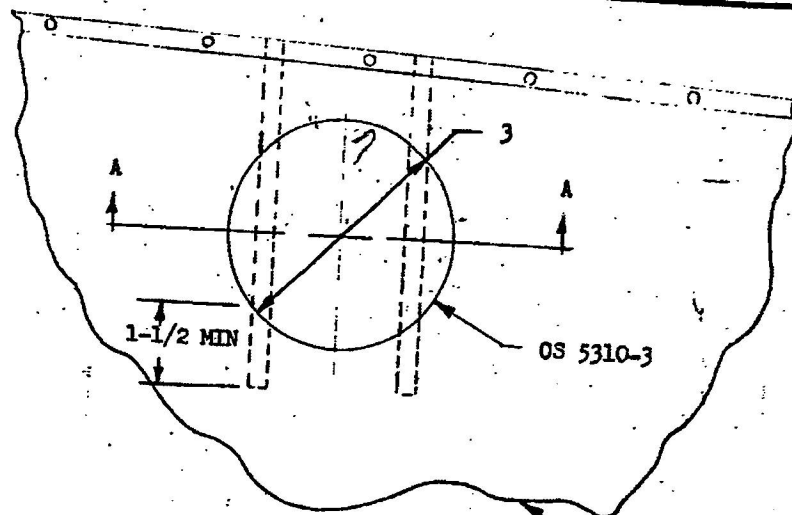


FIGURE 2

WRITTEN BY <i>R. N. Fairgert</i>	DATE ISSUED 4-29-53	<b>OVERHAUL SPECIFICATION</b> FLOOR BOARD INSTALLATIONS - MODEL C-45G AND C-45H		
PROJECT ENGINEER <i>[Signature]</i>	DATE REVISED			
APPROVAL <i>[Signature]</i>		Beech Aircraft CORPORATION Wichita 1, Kansas	OVERHAUL SPECIFICATION NO 5310	PAGE 16