

Planning

REPAIR AND OVERHAUL INSTRUCTIONS

CONTROL PEDESTAL REPAIR SCHEME AT THE PRIMING PUMP MOUNTING FLANGE

INTRODUCTION

1 As a result of flexing of the control pedestal skin during priming pump operation cracks may develop in this area.

INSTRUCTIONS

2 The following repair scheme has been devised to enable local repairs to be carried out:

(a) Remove priming pump 37J/2915-00-037-8761 from centre pedestal.

NOTE

Blank off all fuel lines under centre pedestal to prevent ingress of foreign material in accordance with EO 05-1-2A, paragraph 7.

(b) Cut hole in pedestal in accordance with Figures 1 and 3.

(c) Manufacture mounting plate and doubler plate in accordance with Figures 1 and 2.

(d) Using mounting plate and doubler as guide, drill five holes, in centre pedestal. (using #10 drill)

(e) Locate priming pump on mounting plate by drilling 3 holes in mounting plate using pump as guide. Ensure OFF position on pump will be vertical when installed on aircraft.

(f) Rivet doubler plate to centre pedestal with 8 rivets 28/5320-00-117-6938. (Utilizing the same 8 rivets to attach 4 anchor nuts Part NAS447-8SP to the bottom surface of doubler plate as per Figure 3).

(g) Affix pump to mounting plate using existing screws and nuts.

(h) Mount the pump on centre pedestal using 5 screws AN526-832R8.

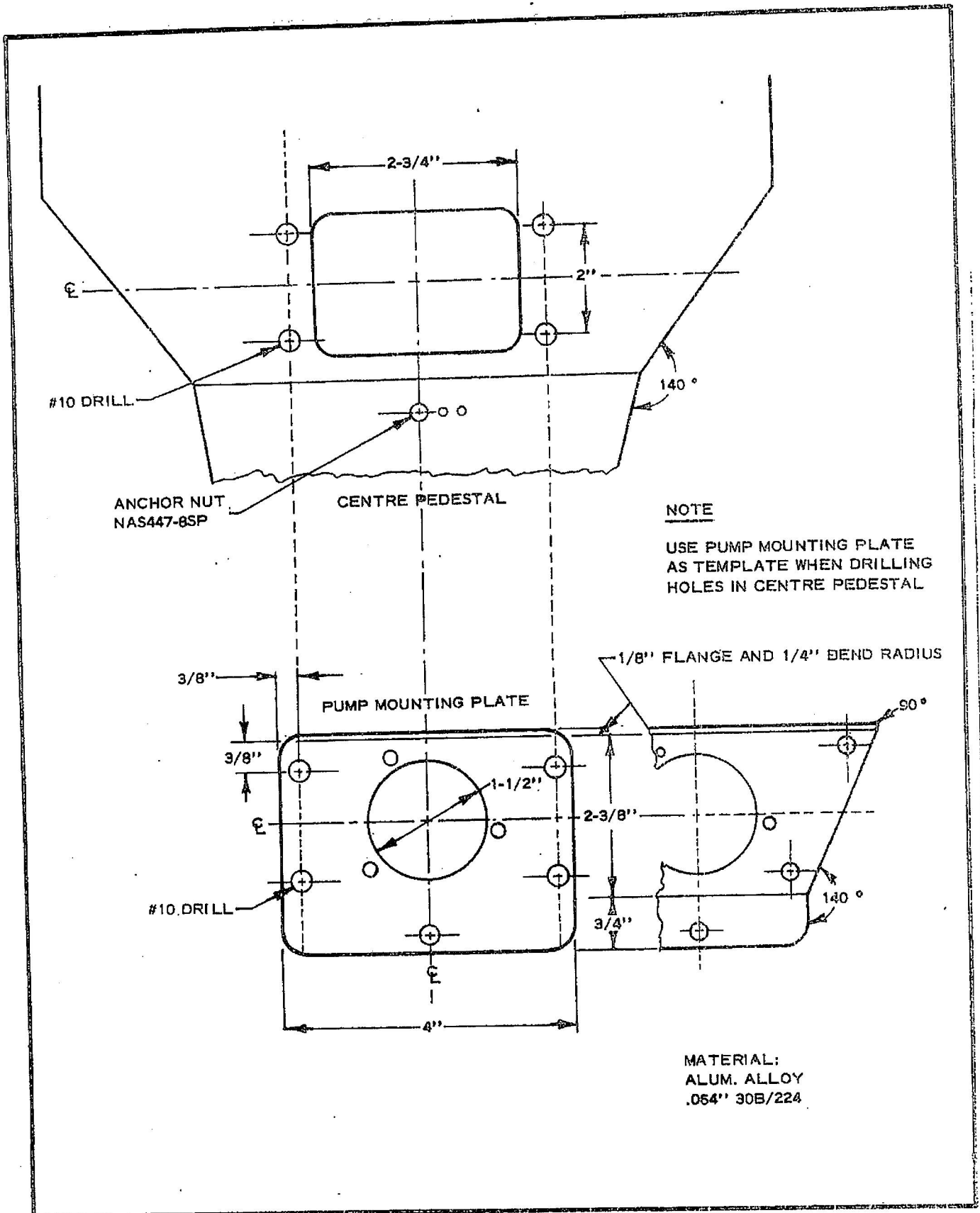
(i) Complete pipe connections under centre pedestal and check for leaks.

(k) Paint mounting plate to match pedestal.

RESERVED

REF ONLY

THIS DATA ^{IS} IS NOT APPLICABLE TO	
PROJECT <i>Expletor as noted.</i>	DATE FEB 22 65 <i>M. K.</i>
PROJECT ENGINEER	



NOTE
USE PUMP MOUNTING PLATE
AS TEMPLATE WHEN DRILLING
HOLES IN CENTRE PEDESTAL

MATERIAL:
ALUM. ALLOY
.054" 30B/224

Figure 1

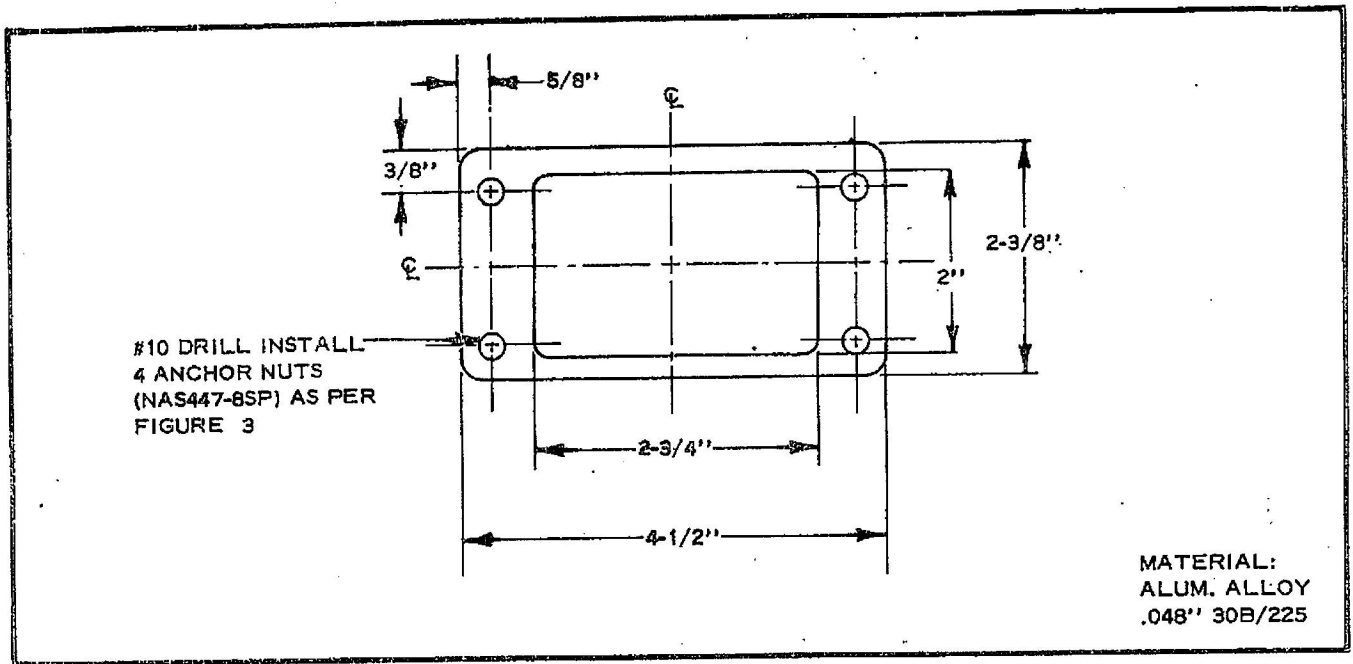


Figure 2 Pump Mounting Doubler Plate

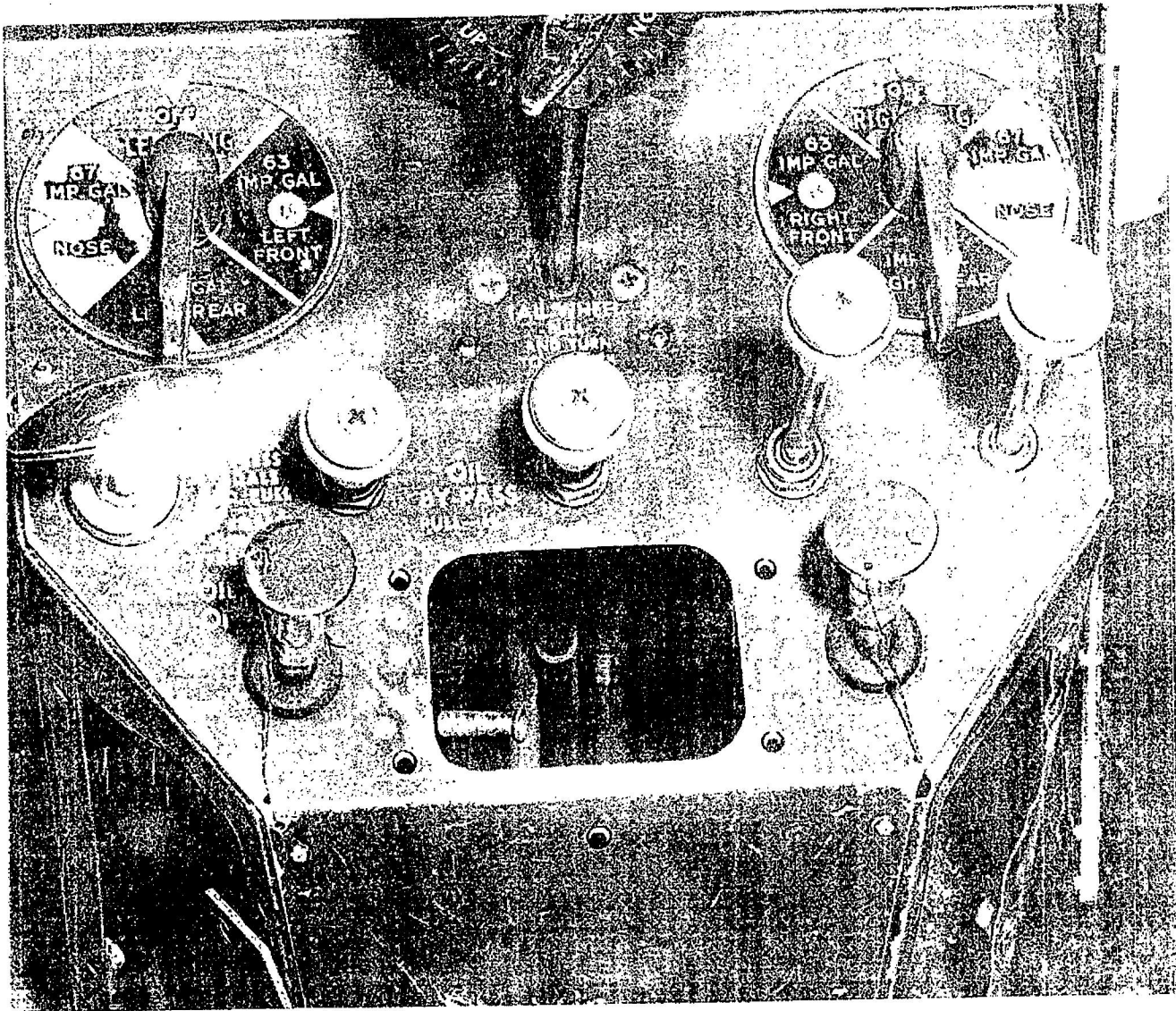


Figure 3

PARTS REQUIRED

The following parts are required:

CAF REF.	PART	DESCRIPTION	QTY.
0B/224		Aluminum alloy sheet .064" 4" x 3-3/8"	1
0B/225		Aluminum alloy sheet .048" 4-1/2" x 2-3/8"	1
N526-832R8		Screw	5
AS447-8SP		Nut	5
8/5320-00-117-6938		Rivet	10
		Paint	AR

ISSUED ON AUTHORITY OF THE CHIEF OF THE DEFENCE STAFF

Prepared by:
MC/SAMO/TM3