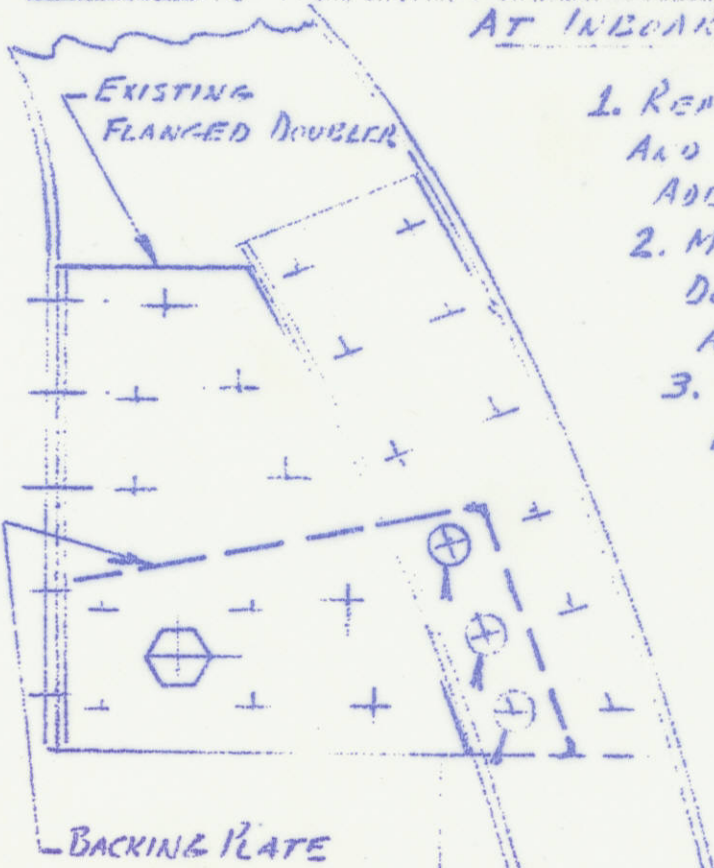


TITLE <b>REPAIR TO CRACKED COWL SUPPORT</b> <i>Support Ring</i>		E.M. NO. <b>16178</b>	ISSUE <b>A</b>	P.R.S. CODE <b>112</b>
PART NO.		EFFECTIVE <b>AS REQ'D</b>		
PART NAME <b>COWL SUPPORT RING</b>		DWG. NO.	DISTRIBUTION INFORMATION A - APPROVE B - INFORMATION	
REASON FOR ISSUE		W/O NO. <b>517-1136</b>	TO A B	
DISPOSITION OF STOCK		CUSTOMER ORDER NO.	DESIGN	
SALVAGE	CHECK BLOCKS AFFECTED	CUSTOMER <b>SHERRITT ORDUN</b>	N/C	
CONCESSION	NOT AFFECTED		PROD. <b>1</b>	
STOP ORDER/RELEASE	USE TO DEFLECTION	TYPE OR MODEL <b>BORCH SUPER 18</b>	ELTYED	
NEW DRAWING	NETWORK		No FLAW'S <b>1</b>	
REVISD DRAWING	SCRAP	AIRCRAFT REGISTRATION NO. <b>CF-YRC</b>	MANUF. " <b>1</b>	
VARIATION	AS NOTED		MATERIAL	
OBSCLETE NOTICE	STRENGTH AFFECTED	DATE <b>MAR 31 70</b>	N/O SUPP.	
USE AS NOTED	YES <input type="checkbox"/> NO <input type="checkbox"/>	DWG. CHANGE YES <input type="checkbox"/> NO <input checked="" type="checkbox"/>	MANUF. SUPT. <b>4</b>	
APPROVALS		CUSTOMER		SALES/CONT. <b>1</b>
ENGINEERING <i>W. R. Lawrence</i>		CUSTOMER		INSPECTION <b>3</b>
CONTRACTS ADMIN. <i>J. M. David</i>		CUSTOMER		R.O.A.F.
OTHER FULL PARTICULARS AND SKETCH WHERE POSSIBLE		CUSTOMER		TEST FLIGHT
<b>REPAIR L.H. COWL SUPPORT RING</b>		CUSTOMER		DWG. CONTROL <b>1</b>

AT INBOARD AND OUTBOARD SIDES:



1. REMOVE EXISTING FLANGED DOUBLERS AND INSPECT EXPOSED AREA FOR ADEQUATE STOP DRILLING ETC.
2. MAKE REPLACEMENTS FOR ABOVE DOUBLERS USING .063-2024 T3 AND EXISTING FASTENINGS.
3. REPLACE EXISTING 3/16 PACKERS LOCATED AT REAR FACE OF RING WITH A LARGER VERSION EXTENDED TO PICK UP ON 3 INNER FASTENERS OF LOWER RING. MAKE THIS BACKING PLATE FROM .187-2024 T3 MAT'L AND REPLACE THE 3 RIVETS INDICATED WITH NO. 8 SIZE BOLTS SUCH AS MS 27039-0809 OR AN 525-832-9.

**JIM PHYL BOB  
JACK DES AM  
ED FILE ART  
PETE**

APR 1 1970

1756-KRMAS-8N-1-70