

# BRISTOL AEROSPACE ENGINEERING MEMORANDUM LIMITED

**TITLE**  
PROVISION OF STRETCHER CARRYING  
CAPABILITY IN A/C CF-NUY

E.M. NO. <b>16010</b>		ISSUE <b>A</b>	FILE CODE <b>112</b>
EFFECTIVE DATE <b>CF-NUY (ONLY)</b>		DISTRIBUTION— A—ACTION B—INFORMATION	
DWG. NO. _____		TO <b>A</b>	
W/O NO. <b>247-1090</b>		DESIGN <b>2</b>	
CUSTOMER ORDER NO. <b>85-795</b>		A/C <b>2</b>	
CUSTOMER <b>SHERIFF-GORDON</b>		PROC. _____	
TYPE OR MODEL <b>C45-H.</b>		ELECT'G _____	
AIRCRAFT REGISTRATION NO. <b>CF NUY</b>		MATERIAL <b>b</b>	
DATE <b>Aug 22/69</b>		A/C SUPT. _____	
DWG. CHANGE NO. _____		MANUF. _____	
YES <input type="checkbox"/> NO <input checked="" type="checkbox"/>		SALES/CONT. _____	
INS. _____		INSPECTION _____	
ORIGINATED BY <b>M. Treisman</b>		R.O.A.P. _____	
RAIL PROD. ENG. _____		TEST FLIGHT _____	
RAIL INS. _____		DWG. CONTROL _____	
CONTRACTED ADMIN. _____		CUSTOMER _____	
CUSTOMER _____		CUSTOMER _____	

**PART NAME**  
STRETCHER PROVISION

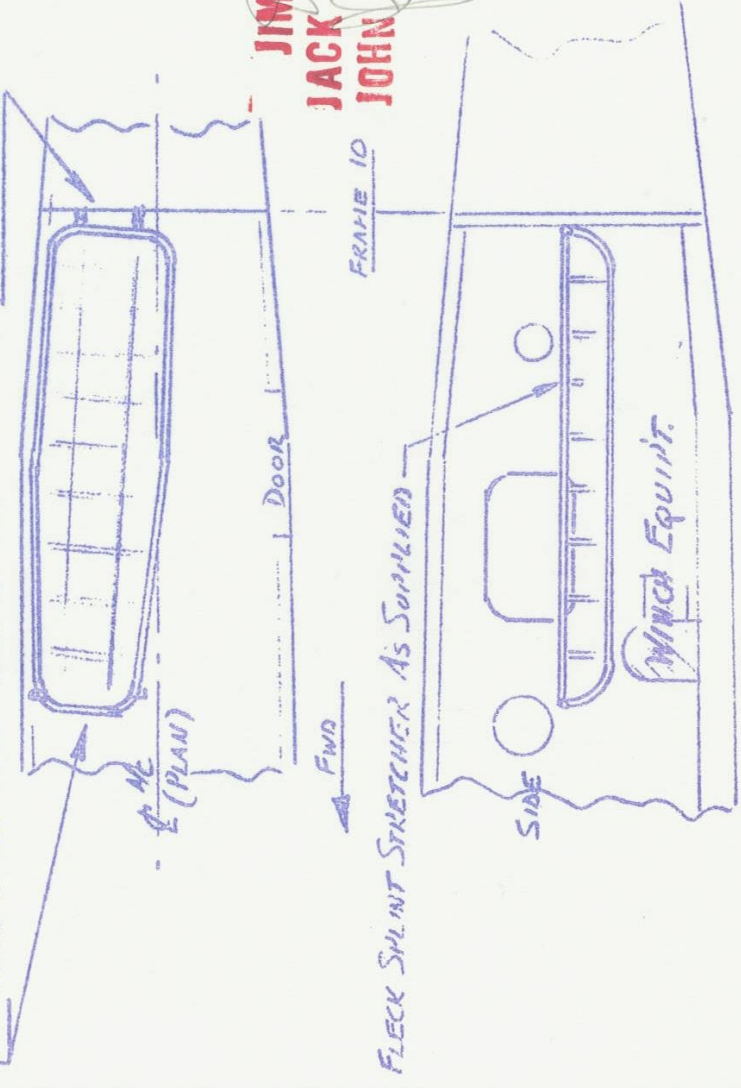
REASON FOR ISSUE	DISPOSITION OF STOCK			
	CHECK BLOCKS AFFECTED	AS NOTED	REWORK	SNAP
STOP ORDER/RELEASE				
NEW DRAWING				
REVISED DRAWINGS				
VARIATION				
OBSOLETE NOTICE				
USE AS NOTED	<b>X</b>			

**APPROVALS**  
**M.P. Rowner** ENGINEERING  
**J.M. Reid** CONTRACTED ADMIN.

GIVE FULL PARTICULARS AND SKETCH WHERE POSSIBLE.  
**INSTALL STRETCHER BRACKETS AS SHOWN ON SHEETS 2, 3 &**

**FOR DETAILS OF ATTACH AT STRETCHER 'FOOT' SEE SHEET 5**

**FOR ATTACH. T OF STRETCHER 'HEAD' SEE SHEETS 2+3**



**JIM [Signature]**  
**BOB [Signature]**  
**JACK DESAMTOI.**  
**JOHN F. LE MAI**

Aug 22/69

# BRISTOL AEROSPACE ENGINEERING MEMORANDUM

LIMITED

TITLE

PROVISION OF STRETCHER CARRYING CAPABILITY IN A/C CF-NUY

E.M. No.

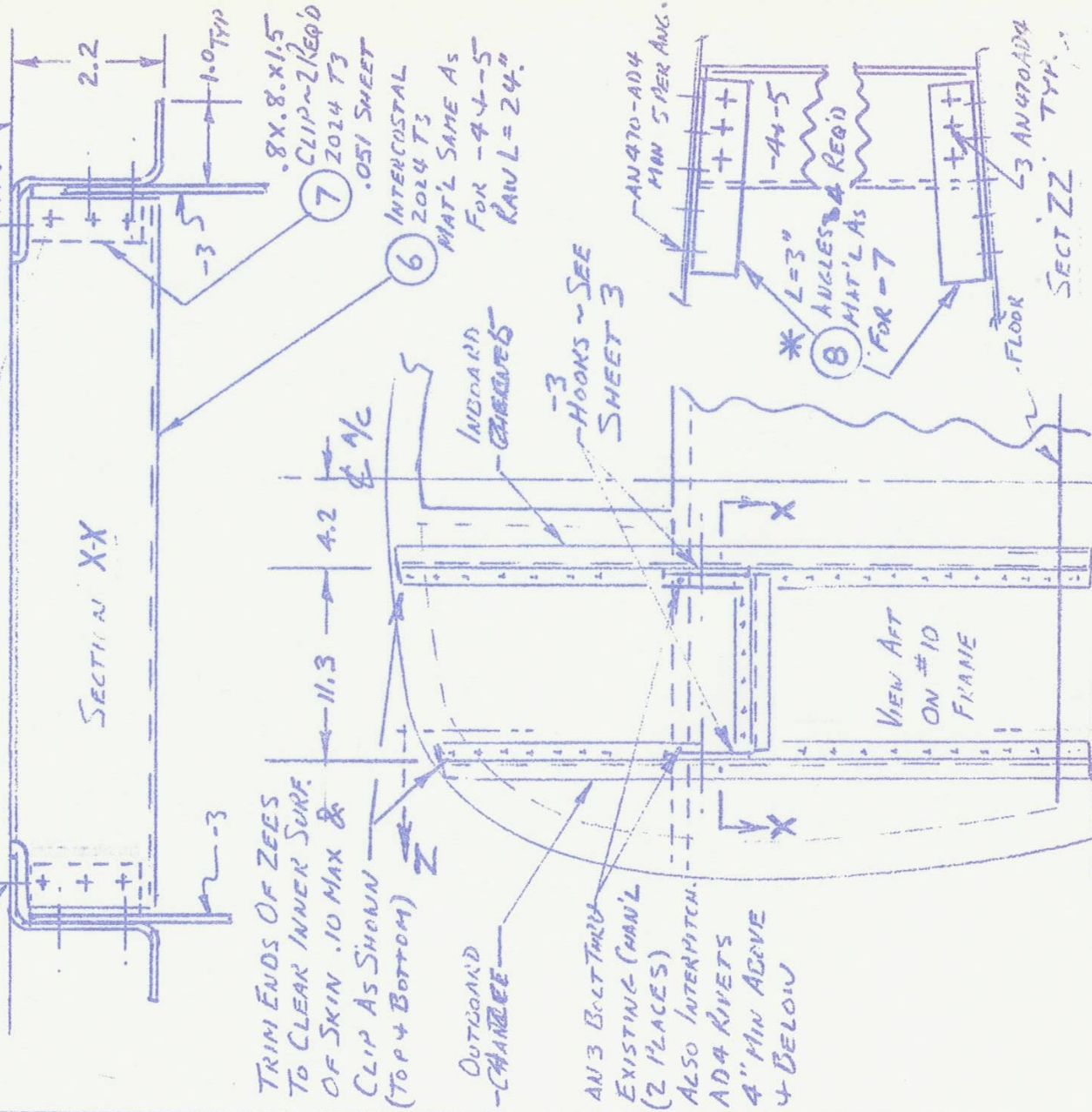
16010

## STRETCHER HEAD SUPPORT:-

AN 470-AD4 @ 1.5 PITCH ~ TOP EXCEPT WHERE NOTED

FRAME 10 ~ FWD FACE (REF)

3 AN 470 AD4 TYP.



\* NOTE: THESE ANGLES TO BE LEFT 'OPEN' & ADJUSTED ON ASS'Y.



TITLE

PROVISION OF STRETCHER CARRYING CAPABILITY IN A/C CF-NUV

E.M. NO.

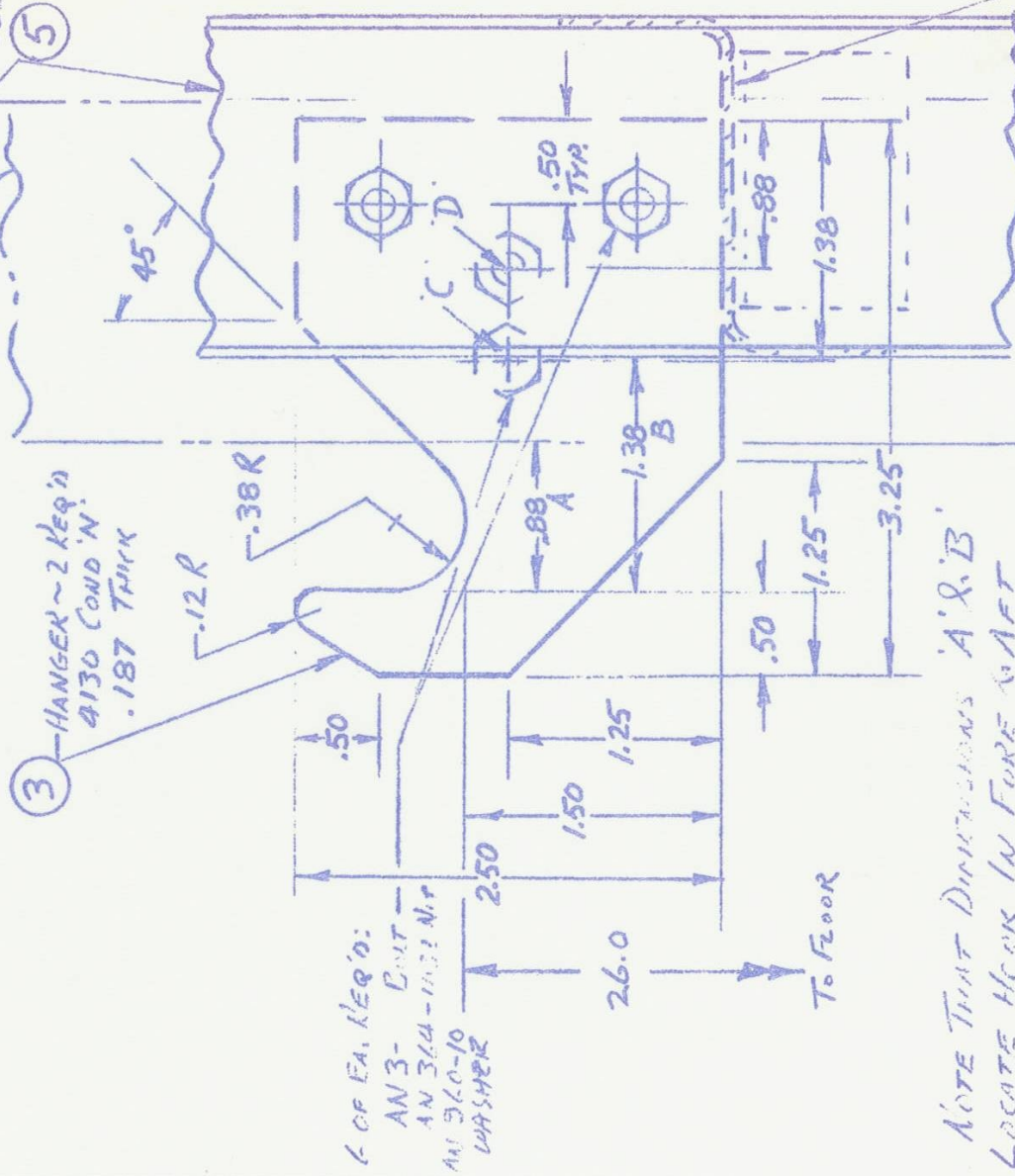
16010

STRETCHER HEAD SUPPORT:

INSTALL HANGERS & CHANNELS AT BULKHEAD #10 AS SHOWN:

SEE SMT 2 FOR DIMS  
ZEE  
④ CHANNEL - OUTBOARD  
2024 T3  
RAW LENGTH .051 SMT ZEE  
50" EA. CHANNEL/BD  
2024 T3  
⑤ .051

③ HANGER - 2 REQ'D  
4130 COND'N.  
.187 THICK



4 OF EA. REQ'D:  
AN 3- Bolt -  
AN 364-1031 Nut  
AN 560-10  
WASHER

NOTE THAT DIMENSIONS 'A' & 'B'  
LOCATE HOOK IN FORE AFT  
DIRECTION. 'A' REFERS TO OUTSIDE  
CHANNEL & 'B' TO INSIDE CHANNEL.  
ALSO, THIRD BOLT IN PATTERN IS  
LOCATED AT 'C' FOR OUTBOARD CHANNEL  
& 'D' FOR INSIDE CHANNEL.

APPROX LOCATN  
CF INTERCOSTAL-6

BRISTOL AEROSPACE ENGINEERING MEMORANDUM  
LIMITED

TITLE

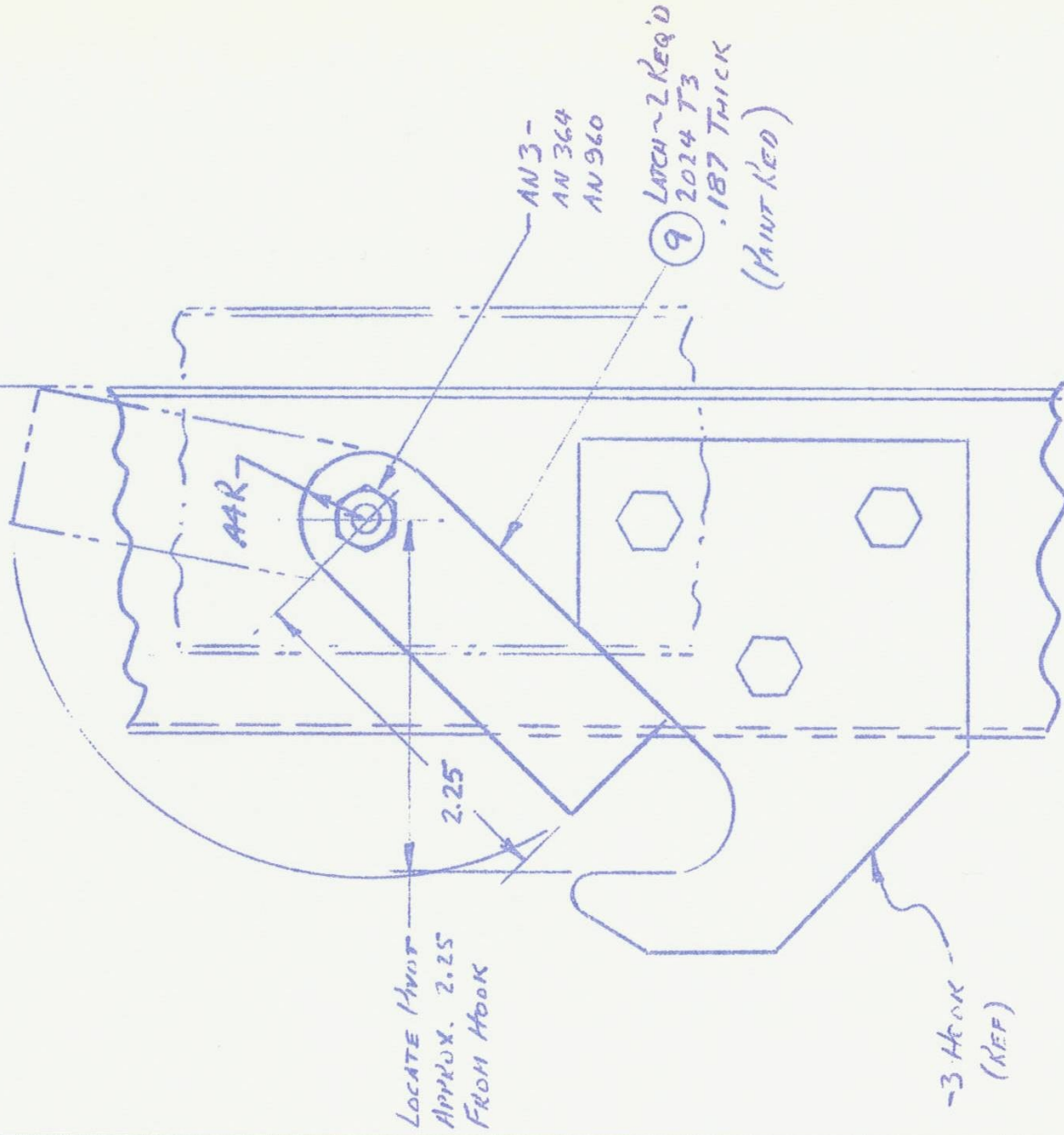
STRETCHER CARRIER

A/C CF-NUY

E.M. NO.

16010

INSTALL LATCHES ON BOTH HOOKS AS SHOWN:—



NOTE: P/NUT BEET THRU' LATCH MUST BE TIGHT ENOUGH TO REMOVE ALL SLACK BUT PERMIT LATCH MOVEMENT BY HAND.



# BRISTOL AEROSPACE ENGINEERING MEMORANDUM

LIMITED

TITLE

STRETCHER CARRIERS  
A/C CF-NUY

E.M. No. 166890

