

TITLE

REPAIR & NEW MANUFACTURE OF INSTRUMENT
PANEL SHOCK MOUNT BRACKET

FILE CODE
111-63
12943
IMMEDIATELY

PART NO.	734-183B34-B	PART NAME	BRACKET - PANEL SUPPORT
USE OF E.M.	DISPOSITION OF STOCK		
SALVAGE	CHECK CLOCKS AFFECTED	NOT AFFECTED	USE TO REWORK
COMPRESSION			REWORK
STOP ORDER/RELEASE			AS NOTED
NEW DRAWING	PARTS COMPLETED		
REVISED DRAWING	PARTS IN PROCESS		
VARIATION	TOOLING		
OBsolete NOTICE	RAW MATL.		
USE AS NOTED	INTERCHANGEABILITY AFFECTED	YES	

ORIGINATED BY
W Wein
BY *W. W. Stoll, Engr.*
E. J. G. ...
S. A. W. INSPECTION

APPROVALS

DATE 20 JAN 60

DWG. CHANGE NO. *1*

DATE 20 JAN 60

DWG. ORIGIN. NO. *3*

CUSTOMER'S ORDER NO.

CUSTOMER

J. McKeown, Engr.

OTHER FULL PARTICULATE AND SKETCH WHERE POSSIBLE

TO PREVENT DEVELOPMENT OF FATIGUE CRACKS
IN INSTRUMENT PANEL SHOCK MOUNT BRACKET 734-183B34-B
FUTURE PRODUCTION ITEMS ARE TO INCORPORATE AN
EXTRA CLIP AS SKETCHED ON PAGE 2

USED BRACKETS WHICH ARE CRACKED IN THE
CORNER INDICATED BY ARROW 'X' MAY BE REPAIRED
AS FOLLOWS PROVIDED THE CRACK IS NO LONGER
THAN 3/16 INCH

- (A) STOP DRILL CRACK
- (B) REMOVE ANCHOR NUT
- (C) INSTALL EXTRA CLIP AS SKETCHED ON PAGE 2
- (D) REPLACE ANCHOR NUT

BRACKETS WITH CRACKS LONGER THAN 3/16
INCH ARE TO BE SCRAPPED

ENGINEERING MEMORANDUM

TITLE

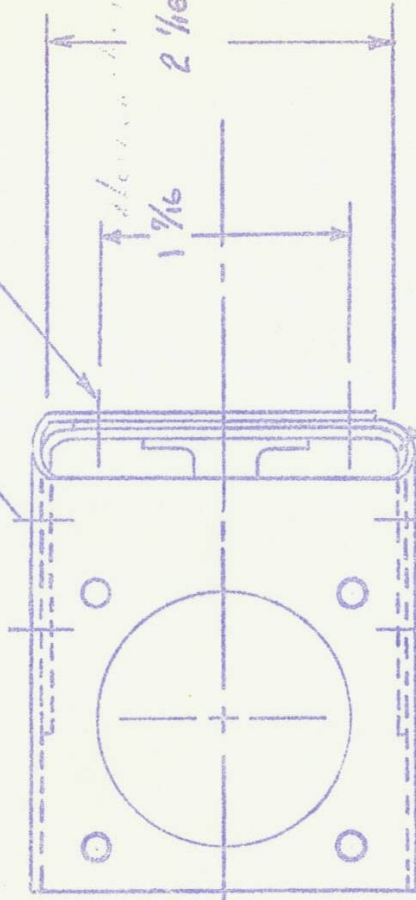
REPAIR & NEW MANUFACTURE OF

E.M. No.

INSTRUMENT PANEL SHOCK MOUNT BRACKET

AN 470 AD3 4 REQ

AN426AD3 2 REQ



EXTRA CLIP

MATL - 2024 AL.

.064 THICK

