

REF: 12701  
 U.S. ID. 12701  
 CASE NO. 111  
 -22  
 SUBJECT: A/c 1516 & Noted

REPAIR - TAIL WHEEL RETRACT  
 CABLE GUARD - #13 BULKHEAD

UNIT NO.	PLANT NAME	DESIGNED BY	DATE	COPIES TO	NO.
		<i>H. Richardson</i>			3
DESIGNER	DESCRIPTION OF WORK	DESIGNED BY	DATE	COPIES TO	NO.
		<i>H. Richardson</i>			6
CHECKED	CHECK MADE	DESIGNED BY	DATE	COPIES TO	NO.
		<i>E. J. Zak</i>			9
STOP ORDER/RELEASE	REASON FOR STOP	DESIGNED BY	DATE	COPIES TO	NO.
		<i>E. J. Zak</i>			2
NEW DRAWING	REASON FOR NEW	DESIGNED BY	DATE	COPIES TO	NO.
		<i>E. J. Zak</i>			1
REVISED DRAWING	REASON FOR REVISED	DESIGNED BY	DATE	COPIES TO	NO.
		<i>E. J. Zak</i>			3
VARIATION	REASON FOR VARIATION	DESIGNED BY	DATE	COPIES TO	NO.
		<i>E. J. Zak</i>			1
COMPLETE NOTICE	REASON FOR COMPLETE	DESIGNED BY	DATE	COPIES TO	NO.
		<i>E. J. Zak</i>			1
USE AS NOTED	REASON FOR USE AS NOTED	DESIGNED BY	DATE	COPIES TO	NO.
		<i>E. J. Zak</i>			3

APPROVALS: *H. Richardson* (S.A. V. INSP. IN CH.)  
*E. J. Zak* (S.A. V. INSP. IN CH.)  
 DATE: 11/10/58  
 TYPE AIRCRAFT: *111*  
 AIRCRAFT REGISTRATION NO.: *111*  
 DIVE CHARGE: YES  NO   
 TEST FLIGHT: YES  NO   
 DWT. CONT.: *111*

The tail wheel retract cable guard on pulleys on V-Brace #13 bulkhead (P/N 404-184131) has been found missing on A/c 1516.

To correct this a bracket will be installed as shown in sketch on page 2 of this EM.

This EM may also be applied to future A/c having this guard missing or unserviceable, but only when the V-brace does not for other reasons require removal. If the V-brace needs to be removed for rectification of other snags, the guard is to be welded on to the pulley attaching bolt support tube in normal manner.

*Artcock 19*  
*Shuttleworth 1*  
*File ✓*

SEP 12 1958

*Sept 11/58*

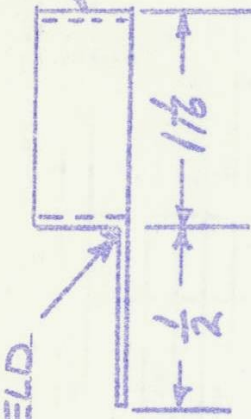
TITLE

REPAIR - TAIL WHEEL RETRACT  
CABLE GUARD - #13 BULKHEAD

ENG. NO.

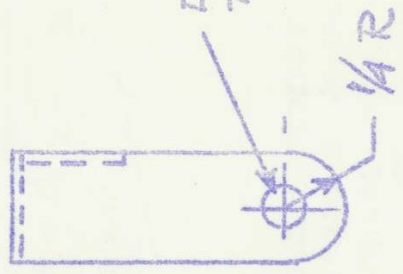
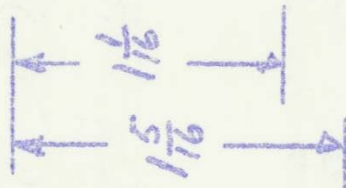
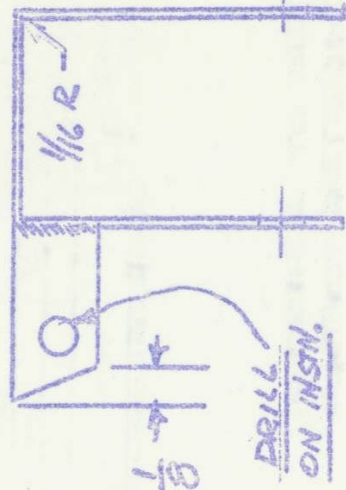
12701

WELD



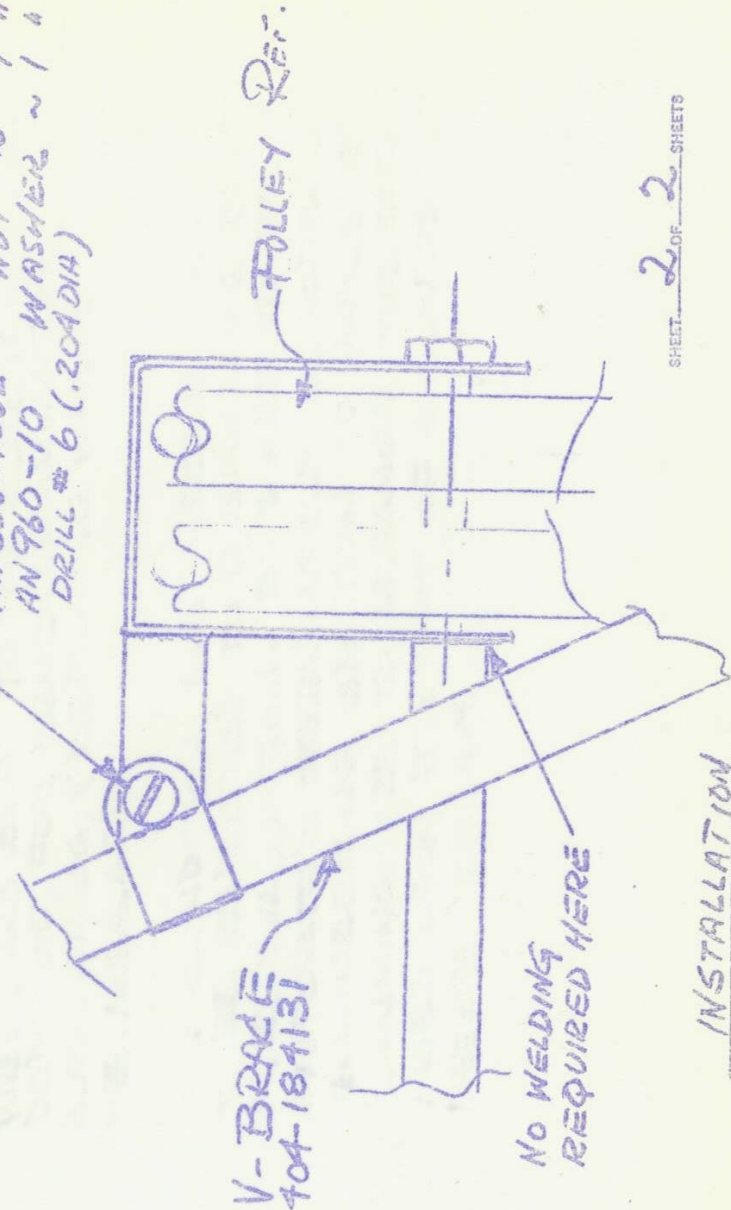
① BRACKET ASSY.

MAKE FROM A130, NORMALIZED  
STEEL. .032 X 1/2 X LENGTH  
NORMALIZE & GRAD. PLATE  
AFTER WELDING



DETAIL

AN 742-8 CLAMP - 1 REQ  
 AN 526-1032-6 SCREW ~ 1 REQ  
 AN 365-1032 NUT ~ 1 "  
 AN 960-10 WASHER ~ 1 "  
 DRILL # 6 (.204 DIA)



V-BRAKE  
404-184131

NO WELDING  
REQUIRED HERE

INSTALLATION