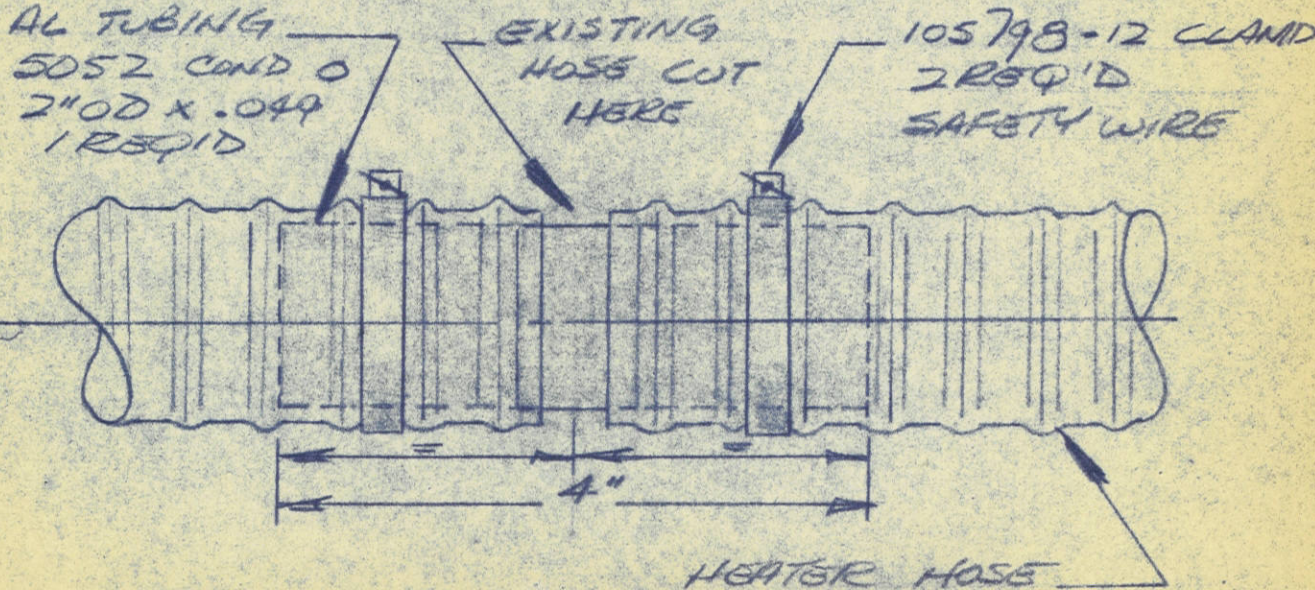


TITLE <u>SALVAGE REPAIR</u> <u>CABIN HEATER HOSE</u>		E.M. NO. 11406 "B"	FILE CODE 111
PART NO. B534 109644-1163-A		DISPOSITION OF STOCK	COPIES TO NO.
PART NAME HOSE - CABIN HEAT		USE OF E.M.	ENG. 5
SALVAGE	DISPOSITION OF STOCK	CUSTOMER'S ORDER NO.	INSPEC 6
CONCESSION	CHECK BLOCKS AFFECTED	CUSTOMER	PROD. 9
STOP ORDER/RELEASE	NOT AFFECTED	PCAF	PLANNING 2
NEW DRAWING	USE TO DEPLETION	TYPE AIRCRAFT	MAT. CONT. 2
REVISED DRAWING	REWORK	EXPENDITURES	SALES/CONT'S 1
VARIATION	SCRAP	AIRCRAFT REGISTRATION NO.	R.C.A.F. 3
OBSOLETE NOTICE	AS NOTED	DATE	ESTIMATING 1
USE AS NOTED	STRENGTH AFFECTED	13 JAN 59	TEST FLIGHT 1
	INTERCHANGEABILITY AFFECTED	DWG. CHANGE	DWG. CONT. 3
	YES NO	YES NO	
APPROVALS	ENGINEERING	CONTRACTS ADMIN.	CUSTOMER
	<i>J. Davidson</i>	<i>W. Beales</i>	<i>J. Johnson W. J.</i>

GIVE FULL PARTICULARS AND SKETCH WHERE POSSIBLE

WHEN THE CABIN HEATER HOSE IS NOT AVAILABLE FOR REPLACEMENT PURPOSES IN THE CASE OF TORN OR CUT HOSES, THE FOLLOWING REPAIR SCHEME MAY BE USED:

THE HOSE WILL BE REPAIRED BY CUTTING THE DAMAGED PORTION OUT & SPLICING AS SHOWN BELOW.



NOTE: WHEN EFFECTIVITY IS OMITTED FROM E.M. CHANGES ARE TO BE EFFECTIVE UPON PLANNING DEPARTMENT AUTHORIZATION.

B-MADE GENERAL SUBJECT TO STOCK 15 JAN 59